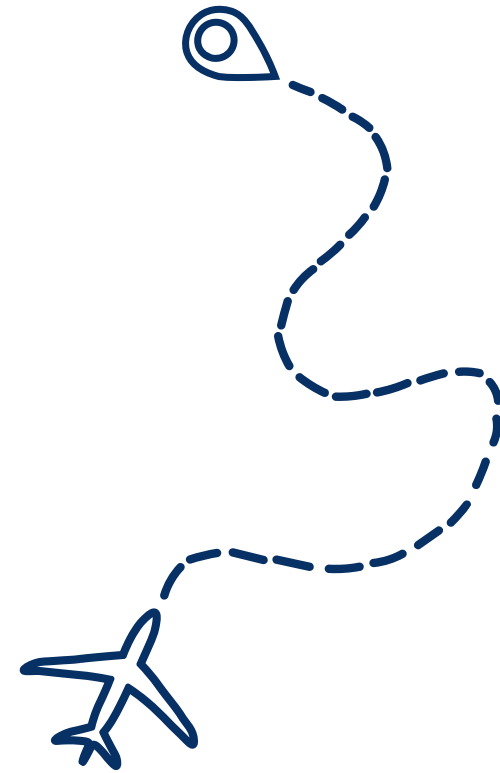
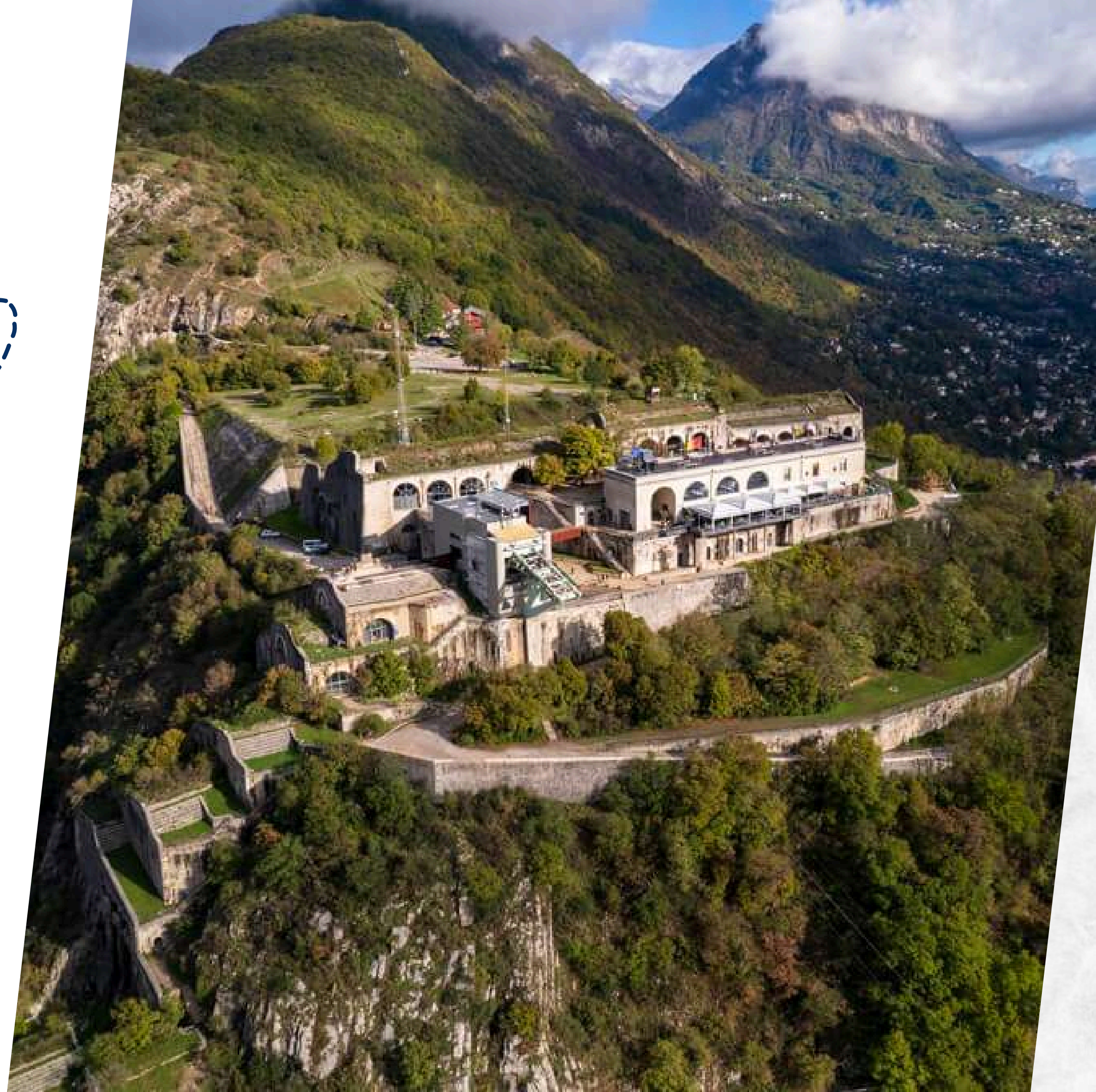


# WELCOME TO GRENOBLE



GRENOBLE  
**INP**  
UGA *Ensimag*

**UGA**  
UFR  
**IM<sup>2</sup>AG** Université  
Grenoble Alpes







# TEAM M2 MOSIG/M2 AI



**Stephanie  
LEYSSIEUX**

IM<sup>2</sup>AG



stephanie.leyssieux@univ-grenoble-alpes.fr



UFR IM<sup>2</sup>AG–building F ground floor



**Numa CROZIER**

ENSIMAG



numa.crozier@grenoble-inp.fr



ENSIMAG - building AMPERE





# TEAM M2 MSIAM/CODAS



**Bérengère DUC**  
(Berry)

IM<sup>2</sup>AG



berengere.duc@univ-grenoble-alpes.fr



UFR IM<sup>2</sup>AG–building F ground floor



**Numa CROZIER**

ENSIMAG



numa.crozier@grenoble-inp.fr



ENSIMAG - building AMPERE





# TEAM M2 ORCO/CYSEC



**Carine BEAUJOLAIS**

IM<sup>2</sup>AG



carine.beaujolaais@univ-grenoble-alpes.fr



UFR IM<sup>2</sup>AG–building F ground floor



**Numa CROZIER**

ENSIMAG



numa.crozier@grenoble-inp.fr



ENSIMAG - building AMPERE



# YOUR ARRIVAL



**DISCORD  
GROUP**



**French courses**



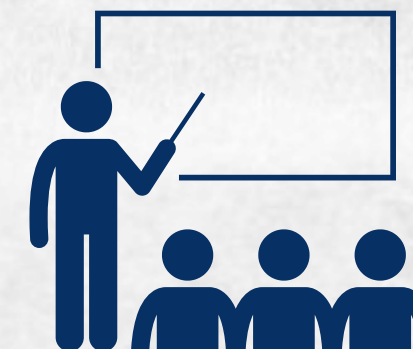
**Events**



**MUSE**



**Registration**

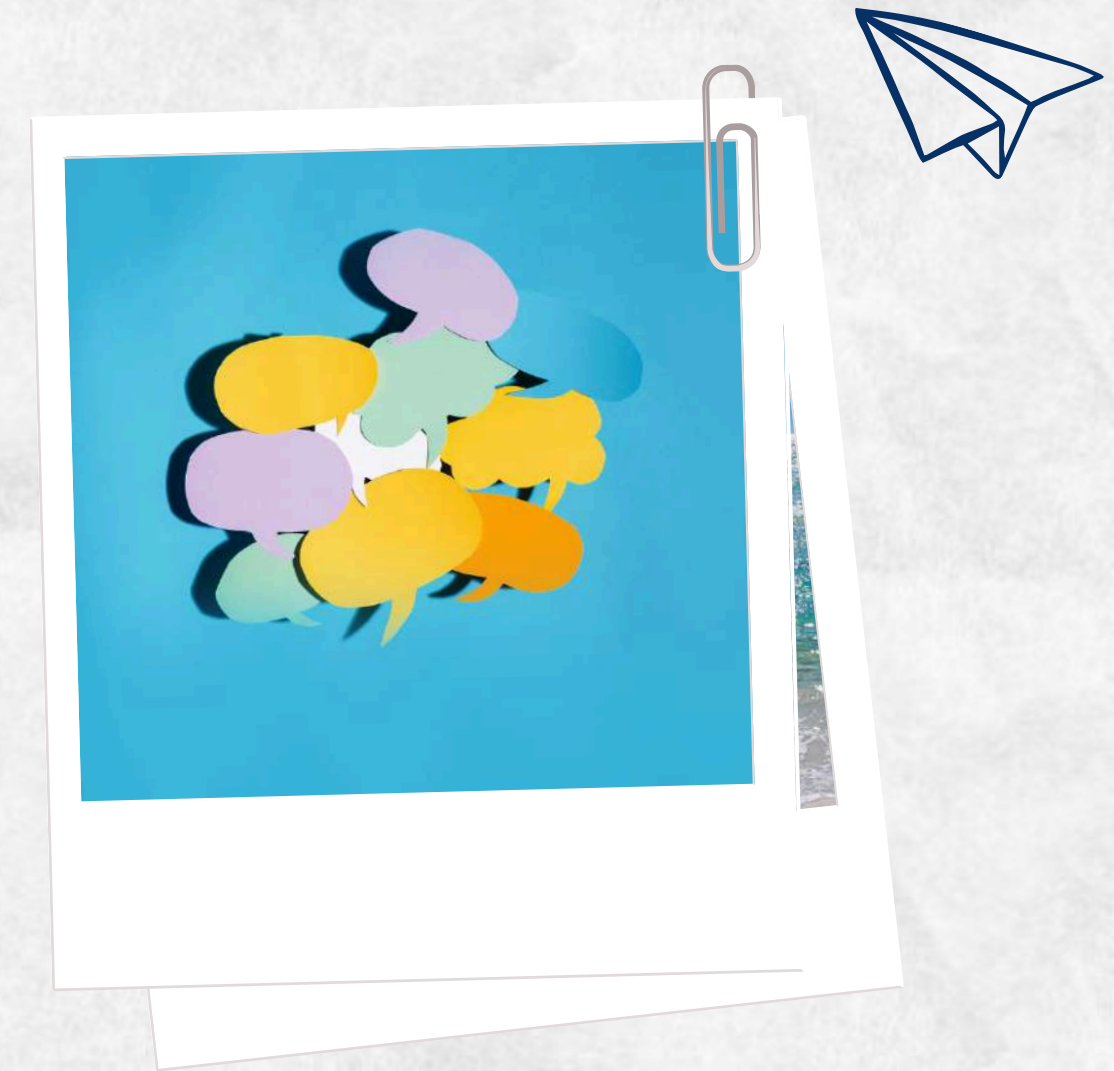
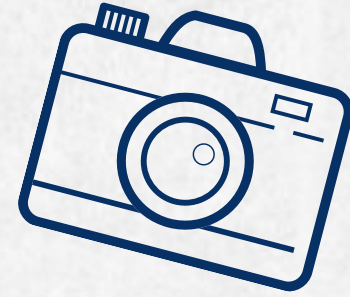


**Cours**



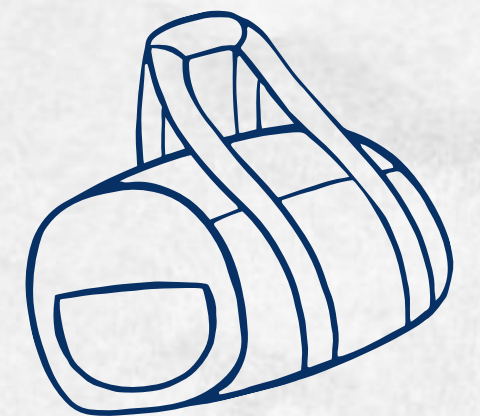


# DISCORD GROUP



Join the Master 2 group. There you will find several chat rooms where various topics can be discussed.

Please ensure you only use your first name and surname; pseudonyms are not permitted.





# REFRESH WEEK

Monday, September 15th	Tuesday, September 16th	Wednesday, September 17th	Thursday, September 18th	Friday, September 19th
<p>Newcomers (French and foreign students) only: Welcome presentation and administrative information 10.30AM (room amphi H)</p>	<p>Orientation meeting ORCO 9.45AM (room F111)</p> <p>Refresh courses CODAS/IA/Msiam/ Mosig 9AM-12PM Hamza Ennaji A022-Amphi Louis Néel</p> <p>Refresh courses Cysec (Secu. A) 8.15-11.15AM C003</p>	<p>Refresh courses CODAS/IA/Msiam/ Mosig 9AM-12PM Hamza Ennaji A022-Amphi Louis Néel</p> <p>Refresh courses Cysec (Crypto. E.) 8.15-11.15AM H104</p>	<p>Refresh courses CODAS/IA/Msia m/Mosig 9AM-12PM Sana Louihichi</p> <p>REX (Ensimag 3A)</p> <p>Refresh courses Cysec (Crypto. E.) 9.45AM-12.45PM C005</p>	<p>Refresh courses CODAS/IA/Msiam/Mosig 9AM-12PM Hamza Ennaji A022-Amphi Louis Néel</p> <p>REX (Ensimag 3A)</p>
<p>Orientation meetings 1.15PM Cysec (room H104) and AI (room H101) 1.30PM CODAS (room H103) 2PM MSIAM (H102) 2.30 MOSIG 2 (amphi H)</p> <p>Refresh courses Cysec (Crypto. E.) 2-5PM H104</p> <p>Python Language CODAS/IA/Msiam/ Mosig 3.30-6.30PM Hamza Ennaji E200-E201</p>	<p>Refresh courses CODAS/IA/Msiam/ Mosig 2-5PM Hamza Ennaji A022-Amphi Louis Néel</p> <p>Challenge wavestone CYSEC/3A</p>	<p>Unix, Informatic environnement 2.30-5.30PM Gregory Mounié E101</p> <p>Refresh courses Cysec (Secu. A) 2-5PM C004</p>	<p>Refresh courses CODAS/IA/Msia m/Mosig 2-5PM Hamza Ennaji A022-Amphi Louis Néel</p> <p>REX (Ensimag 3A)</p>	<p>LaTeX 2-5PM Eric Bonnetier E200-E201</p> <p>REX (Ensimag 3A)</p>



# GRENOBLE, CITY OF INNOVATION



## Higher Education

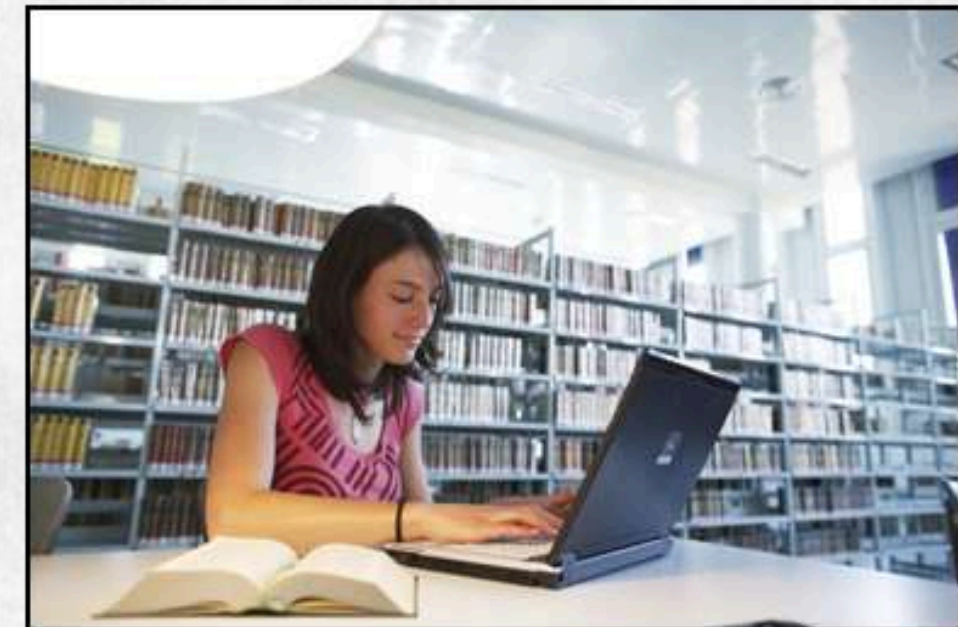
60 000 students  
12% of the population are students  
22% are international students  
45% of the students study in Science



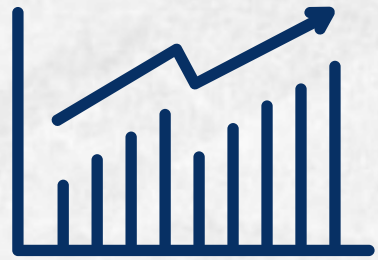
2<sup>nd</sup> largest scientific center in France  
5<sup>th</sup> most inventive city in the world (Forbes)  
3<sup>rd</sup> European city of the future (Financial Times)  
2<sup>nd</sup> most innovative city in Europe (Capitale)  
Winner 2022: European Green capital

## Population

500 000 residents







UGA : 60 000 students - Third largest university in France  
Arts, Literature, Linguistics  
Law, Economy, Management  
Human and Social Sciences  
Political Sciences  
Sciences, Technology, Health



Grenoble INP, Institute of Engineering  
and Management - UGA  
Engineering sciences,  
7 000 students  
Management,  
2 000 students







# NEW INTERNATIONAL STUDENTS

[WEBSITE](#)



[Getting organized](#)



[Steps for your arrival  
and settling in Grenoble](#)



[Buddy program](#)



[IntEGre student  
association](#)



[Welcome Pack](#)





# MUSE

## MAISON UNIVERSITAIRE DES SERVICES À L'ÉTUDIANT

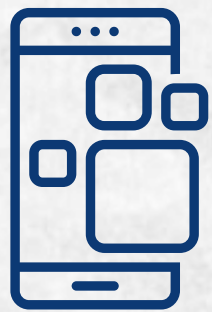


Let's GO !





# GROUPING OF SERVICES



Service  
UGA  
Campus



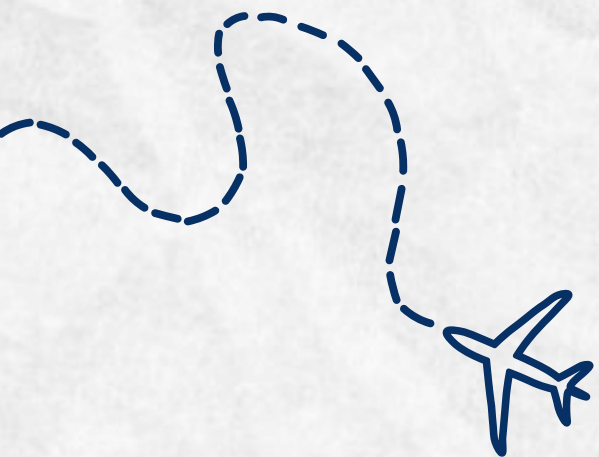
International  
Students &  
Scholars Office  
(ISSO)



Health centers for  
students

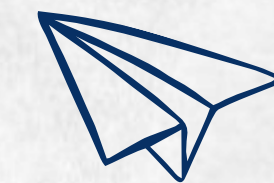


Disability  
Services





# ISSO INTERNATIONAL STUDENTS & SCHOLARS OFFICE



Information

Welcome

Support



International



Students  
PhD students  
Researchers  
Families

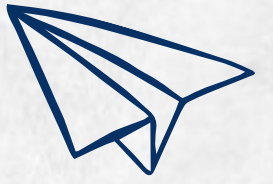


Accommodation  
Residence permits  
Insurances  
Health insurances  
CAF  
Daily life ...

A service of Université Grenoble Alpes entirely dedicated to international students, doctoral students, researchers and their accompanying family.



# HOUSING ALLOWANCE



► **All students\* can apply for CAF if they :**

Stay in France for more than 3 months

Have a bank account in France or in the SEPA

► **The amount of the allowance depends on**

- the type of accommodation
- the rent
- your financial resources
- your personal situation...

[www.caf.fr](http://www.caf.fr) 



**Demande en ligne\***  
**Online application\***

**\*If bank account  
in the SEPA :  
paper application**



# HEALTH CENTERS FOR STUDENTS



A health and prevention centre open to all university students :

General medicine, psychology, gynecology...



Access to care without advance payment



Online appointment booking for most consultations  
(**imperative: use the university email address**)

**For more information**



**Documents to be provided**

**Student card mandatory**

Carte vitale, (European card)  
Certificate of health insurance

Access to care remains free of advance payment, even in the absence of these documents.



**in Saint-Martin-D'Hères  
Building MUSE**



# ACCOMPANYING DISABILITY



The UGA and Grenoble INP assist students with disabilities during their studies at the university

Do you believe you have **a disability and require accommodations** for your classes and/or exams?

Do you need :

- Extra time for exams?
- The assistance of a secretary to read and write?
- To use special equipment?



# ACCOMPANYING DISABILITY



Request for study and exam accommodations for students with disabilities



You will find all the information on the website. 



We then invite you to present your PAEH to your school and your teachers.



Bérengère DUC  
(Berry)  
berengere.duc@univ-grenoble-alpes.fr



Moufida Derbal  
moufida.derbal@grenoble-inp.fr





# ACCOMPANYING **DISABILITY**



**1st semester  
until  
7 November**

**2nd semester  
20 March**



# YOUR SCHEDULE IN REAL TIME

## M2 ORCO

To consult your schedule : ADE

I have my AGALAN login details



[Click here](#)

I haven't my AGALAN login details



[Click here](#)

[Application Campus](#)  
[UGA](#)

A graphic of a blackboard timetable with the word 'TIMETABLE' written in yellow. It shows a grid for Monday through Friday with time slots.

TIMETABLE					
Time \ Day	Monday	Tuesday	Wednesday	Thursday	Friday



# YOUR SCHEDULE IN REAL TIME MASTER 2

Please note that our international **Master 2**  
**(MOSIG, SIAM, Cysec)**  
courses are organised by INP- Grenoble.  
To consult the timetable



[Click here](#)

- 1 - Once you see "Extérieurs 2025-2026" please select
- 2 - Etudiants then Ensimag
- 3 - Masters

**Bienvenue dans les emplois du temps de Grenoble INP !**

liens qui vous permettent de consulter les différents emplois du temps, la documentation et les réservations de ressources de Grenoble INP.

**ENSEIGNANTS / PERSONNELS** : accès authentifié, restreint aux personnels de Grenoble INP

- [Emploi du temps 2024-2025](#) (année en cours)
- [Emploi du temps 2025-2026](#) (année à venir)

**ETUDIANTS** : accès authentifié, filtré par composante

- [Etudiants Ense3 2024-2025](#), [Etudiants Ense3 2025-2026](#)
- [Etudiants Ensimag 2024-2025](#), [Etudiants Ensimag 2025-2026](#)
- [Etudiants Esisar 2024-2025](#), [Etudiants Esisar 2025-2026](#)
- [Etudiants Formation continue 2024-2025](#), [Etudiants Formation continue 2025-2026](#)
- [Etudiants GI 2024-2025](#), [Etudiants GI 2025-2026](#)
- [Etudiants Pagora 2024-2025](#), [Etudiants Pagora 2025-2026](#)
- [Etudiants Phelma 2024-2025](#), [Etudiants Phelma 2025-2026](#)
- [Etudiants Prépa INP Grenoble 2024-2025](#), [Etudiants Prépa INP Grenoble 2025-2026](#)
- [Etudiants Prépa INP Valence 2024-2025](#), [Etudiants Prépa INP Valence 2025-2026](#)

**EXTÉRIEURS** : accès sans authentification et sans informations enseignants

- [Extérieurs 2024-2025](#)
- [Extérieurs 2025-2026](#)

**LISTE DES RESSOURCES**

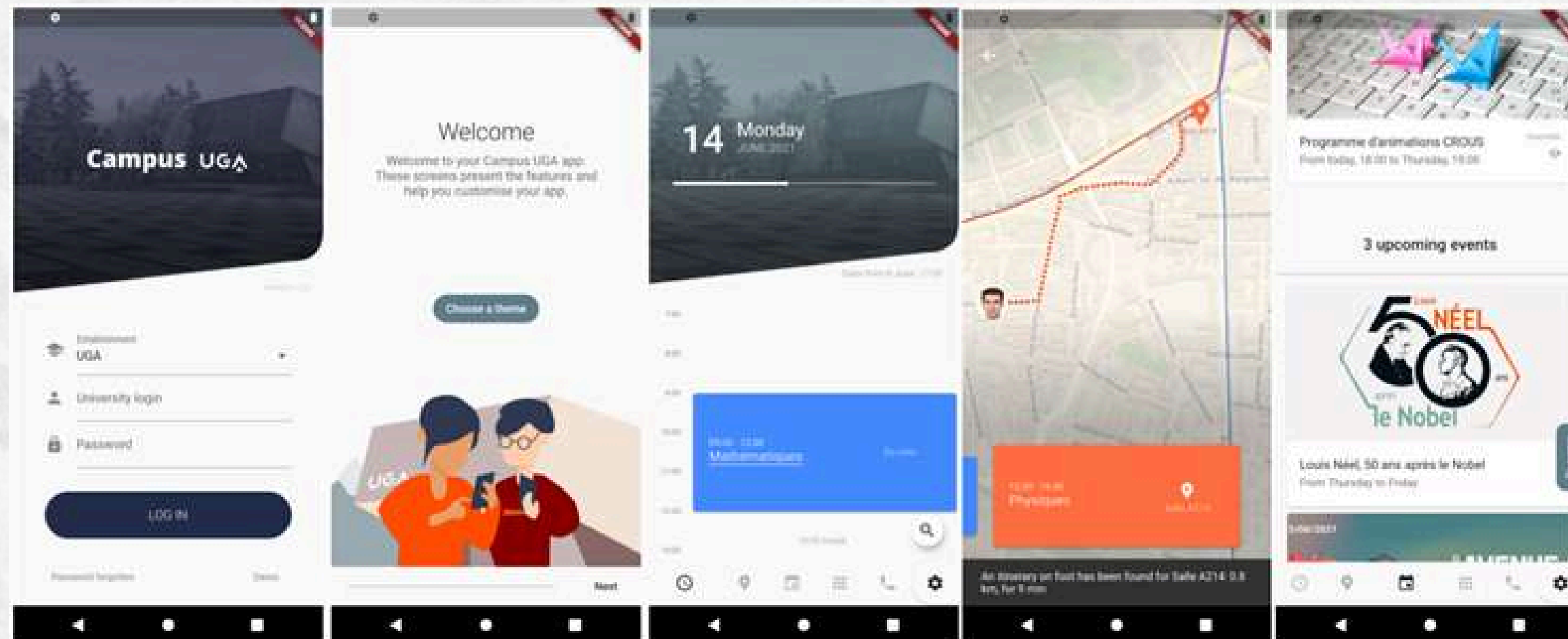
- ▾ Etudiants
  - ▾ ☐ Ense3
    - ▾ ☐ Ensimag
      - ▾ ☐ ingénieurs
        - ▾ ☐ masters
          - ☐ codas1
          - ☐ codas2
          - ☐ cysec
          - ☒ mosig2
          - ☒ msiam2
        - ☐ rie1
        - ☐ rie2
      - ▾ ☐ mastère
    - ▾ ☐ Esisar
    - ▾ ☐ Formation continue
    - ▾ ☐ Génie industriel
    - ▾ ☐ Pagora
    - ▾ ☐ Phelma
    - ▾ ☐ Polytech
      - ☐ Post\_Master\_01
      - ☐ Post\_Master\_02
    - ▾ ☐ Prépa INP Grenoble
    - ▾ ☐ Prépa INP Valence
    - ▾ ☐ S.mart
    - ▾ ☐ alternants
    - ☐ x
    - ▾ ☐ ~ Etudiants multi-écoles
  - ▾ Intervenants (accès restreint)
  - ▾ Salles
  - ▾ Equipements
  - ▾ Enseignements
  - ▾ Autres
  - ▾ Autres (accès restreint)
  - ▾ Catégorie8



# APP CAMPUS UGA



- Consulting the timetable
- Find your way around Campus, find a building, where to eat
- Agenda of cultural and sports events
- Monitor your print quota and swimming pool entrance





# IT OFFICES



## IT assistance (logins, connections, digital tools) :

sos-etudiants@univ-grenoble-alpes.fr

support.info@ensimag.fr

Helpdesks and hotlines : +33 4 57 42 21 98 from Monday to Friday

**Digital Services Catalogue** : <https://services-numeriques-etudiants.univ-grenoble-alpes.fr>

## Reprographics department :

Reprographics : EasyRepro and self-service : Papercut







# UNIVERSITY LIBRARIES

 BU Droit-Lettres (Law/Letter library)  
BU Joseph-Fourier (Sciences library)

 Hours 8 am -7 pm  
Until 10 pm from 16th September 2024 (Sciences library)  
Saturday 9 am -5 pm from 14th September 2024

**– free entrance– relaxing– working –**

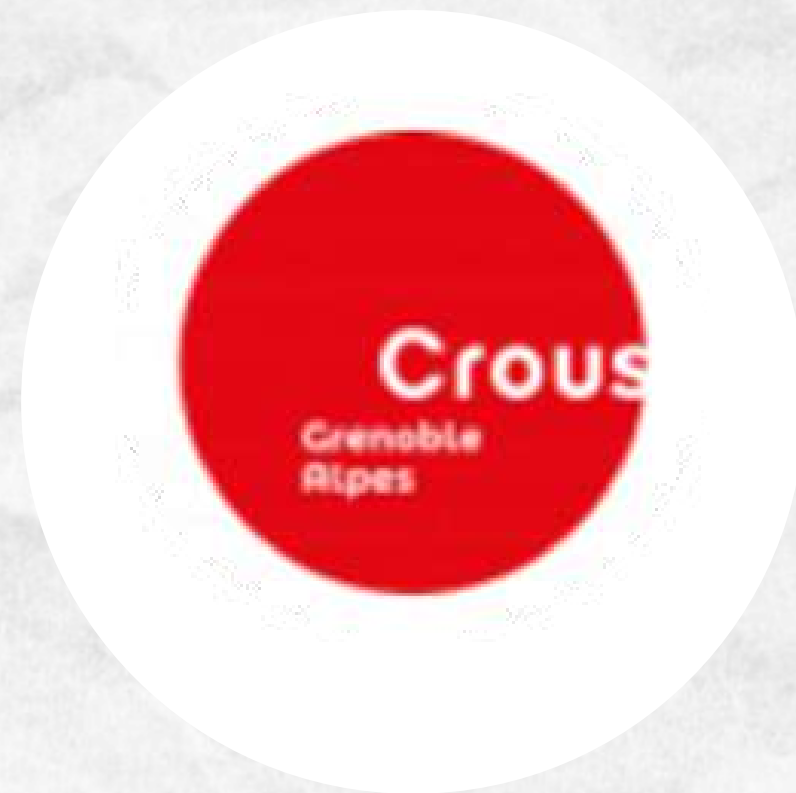
copiers, book rooms for group work, online documentation,  
access to computers...

with your student card, you can borrow books and other  
things!





# UNIVERSITY RESTAURANTS

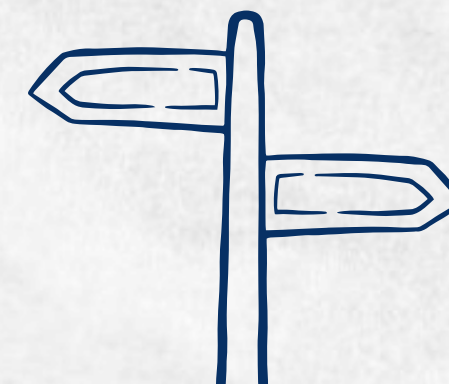


Find all university restaurant [here](#)

Pay with your student card with the IZLY app or with bank card (show your student ID to get student discount).

Activate your account with the e-mail sent to student mailbox.

More information on  
[IZLY](#) and [CROUS](#)







# SPORT

WEBSITE



U-Glisse



Sports Association



U-Grimpe



Swimming.pool



# MOVING AROUND TOWN



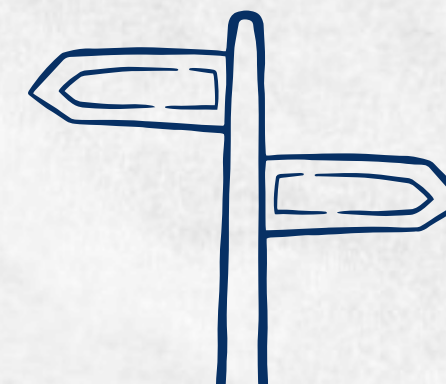
**Métro** *vélo*

<https://www.veloplus-m.fr/>



! Fine of minimum 61€ !  
if no valid ticket

<https://www.reo-m.fr/>





# ADMINISTRATIVE PROCEDURE





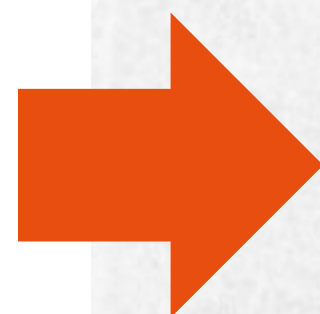


# REGISTRATION

IA Web



Complete procedure will be  
ON LINE (IA web)



## WHAT IS MANDATORY FOR YOUR ONLINE REGISTRATION?

Your **OPI number (FSX.....)** received by email from the registrar's office

**Login = "FSA00" + the 5 last digits of your application number**

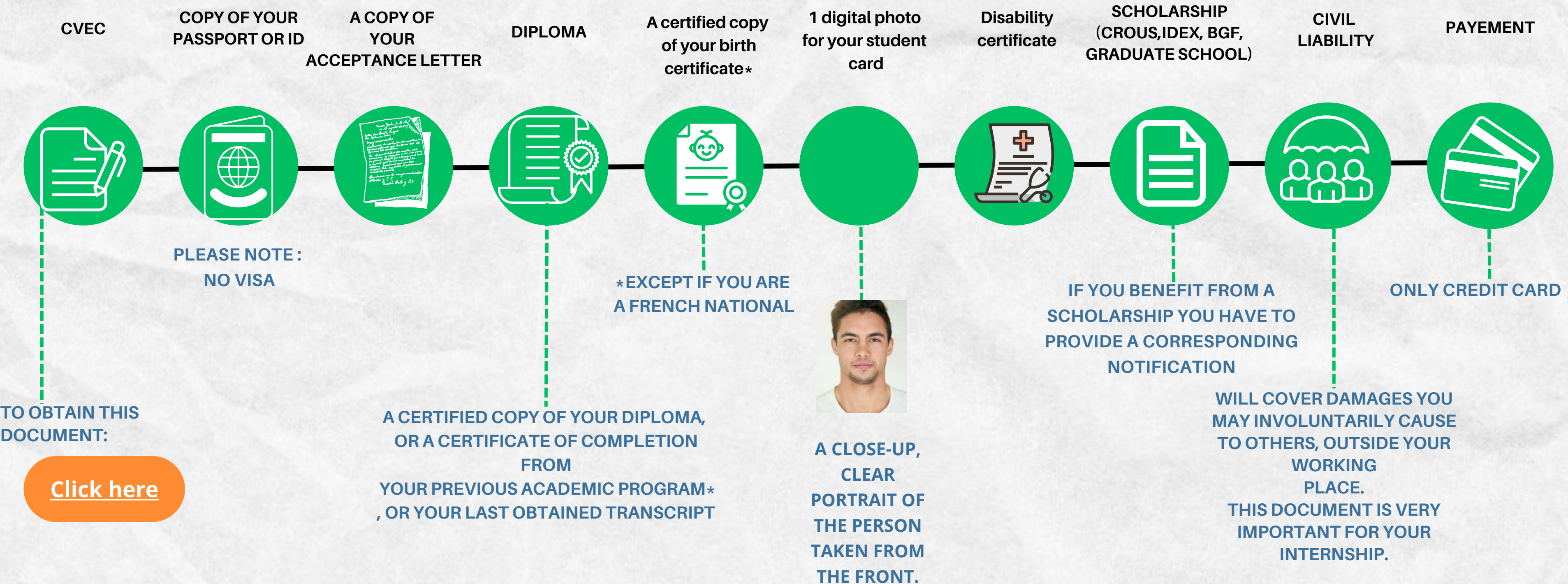
**An international credit card** for payment of the fees (except scholarship notification specifying exemption: BGF, BES, embassy...)

**If payment by international credit card is not possible, please do not proceed to online registration and contact your registrar's officer**

All the requested documents in digital format



# DOCUMENT PROOF



\* Important: an accredited translator must translate documents (in French or English)



Please go to :

<https://www.grenoble-inp.fr/fr/formation/inscriptions-reinscriptions-en-ligne>



Select : 1ère inscription

#### 1ÈRE INSCRIPTION

##### Pièces nécessaires à votre inscription en ligne :

- Numéro INE : numéro figurant soit sur votre relevé de notes du baccalauréat français (n° INE ou BEA) soit sur votre ancienne carte d'étudiant.
- Carte bancaire pour procéder au paiement des droits.

Procédez à votre inscription en ligne



# REGISTRATION

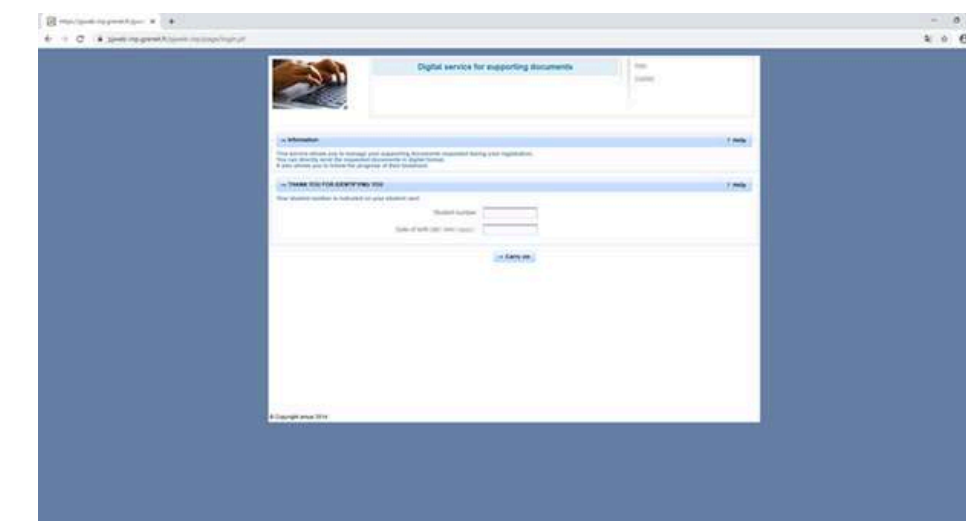
Fill your birthdate without dash (not english format)

Log with your OPI number (FSX.....)

Next steps to register :  
Upload all your documents in digital format on the following link

<https://pjweb-inp.grenet.fr/pjweb-inp/page/login.jsf>

Resize your photo with the included tool if necessary





# REGISTRATION

## Next steps to register :

Fill online the electronics form relating to personal data as well as to the charter and Regulations, whose access link will be communicated to you at the end of your registration

To read and download: documents to keep, useful during the academic year  
<https://www.grenoble-inp.fr/fr/formation/documents-a-lire-et-telecharger>

Next step to obtain your student card and registration certificate:

- Come at Ensimag registration room (building C "Ampère", room C006 "Salle de créativité") in order to verify everything is in order. Do not forget to bring the paper documents asked on the server! It is usually a little photo of yourself (whatever the format) and an ID.
- Only Numa can receive you, check your registration and answer your questions in English. He will be there for you on most **tuesdays, wednesdays and fridays mornings.**



# ADMINISTRATIVE PROCEDURE





# DOCUMENT PROOF

## 1. CVEC

To obtain this document:

[Click here](#)



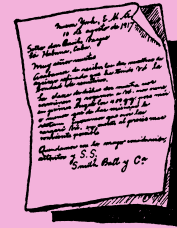
## 2. YOUR PASSPORT OR ID

FORMAT.PDF



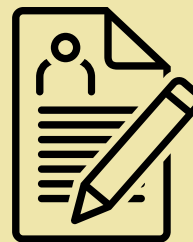
PLEASE NOTE :  
NO VISA

## 3. YOUR ACCEPTANCE LETTER



## 4. REGISTRATION FORM

[Click here](#)



## 5. DIPLOMA AND TRANSCRIPT

FORMAT.PDF



For Master 1 : Transcript of records  
and Bachelor's degree or equivalent

For Master 2 : Transcript of records Master 1  
and Bachelor's degree or equivalent

## ~~6. ONE DIGITAL PHOTO FOR YOUR STUDENT CARD.~~

~~FORMAT .JPEG~~



~~a close-up, clear portrait  
of the person taken  
from the front.~~

## 7. SCHOLARSHIP

IDEX, GRADUATE SCHOOL,  
BGF, CROUS



If you benefit from a scholarship you  
have to provide a corresponding  
notification

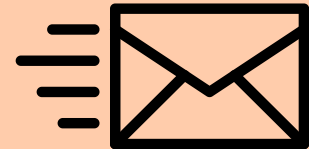
## 8.REQUEST FOR EXEMPTION OF THE DIFFERENTIATED ENROLMENT FEES

[Click here](#)

Only non-EU Students



**9. SEND ALL YOUR DOCUMENTS IN  
.ZIP FORMAT BY ENTERING NAME +  
FIRST NAME IN THE SUBJECT LINE.**



**M2 CYSEC/M2 ORCO**

**CARINE.BEAUJOLAIS@UNIV-GRENOBLE-ALPES.FR**

**M2 MSIAM/M2 CODAS**

**BERENGERE.DUC@UNIV-GRENOBLE-ALPES.FR**

**M2 MOSIG/M2 AI**

**STEPHANIE.LEYSSIEUX@UNIV-GRENOBLE-ALPES.FR**

**10. APPOINTMENT WITH IM<sup>2</sup>AG**

**BOOK AN APPOINTMENT WITH IM2AG OFFICERS DIRECTLY USING  
THIS LINK.**

**[Click here](#)**

**11. PAYEMENT  
ONLY PHYSICAL CREDIT  
CARD  
NOT ON YOUR MOBILE**





# UGA MAILBOX LEO



Check your UGA mailbox frequently

1

[Click here to  
get access](#)



2

**CREATE A DIGIPOSTE PROFILE**

[Click here to  
get access](#)



Digiposte is a digital safe that allows you to centralize, archive, and manage all your important documents. You can upload any documents you wish. The Université Grenoble Alpes will also upload certain original digital documents, such as your transcripts and certificates of achievement. These received documents are digital originals with the same legal value as paper originals. They also bear a "certification seal," a stamp from La Poste, which serves as proof.



# YOUR COMMITMENTS

*Let's build together an inclusive environment for all*

## An essential principle: respect for all

- Your fellow students
- Administrative staff
- Professors and lecturers

## No form of discrimination/harassment will be tolerated

- At Ensimag and IM<sup>2</sup>AG during class hours
- But also outside Ensimag and IM<sup>2</sup>AG (during sports activities, parties, etc)

*Failure to comply with these principles may result in referral to the Grenoble INP and UGA Disciplinary Section, as well as possible legal action.*



## Are you a victim or witness of an assault or incident?

- A system for reporting sexual and gender-based violence, harassment and discrimination has been set up on campus.

The system is common to the whole university site and outsourced (it guarantees impartiality and confidentiality).

- An online reporting form is available on the UGA website: [www.univ-grenoble-alpes.fr](http://www.univ-grenoble-alpes.fr).
- Victims will be contacted for a confidential meeting
- Other non-university services are also available, including France Victime 38, phone number: 1 16 006.





# SPECIAL STATUTS

There are a number of different processes and ways to help students make the most of their studies: high-level artists and top athletes, students with a specific commitment, student entrepreneurs, etc.

If this applies to you or you would like to make a request to adapt your study plan , please contact the Director of studies as soon as possible: [direction.etudes@ensimag.fr](mailto:direction.etudes@ensimag.fr)



**THANK YOU**

